



HUNTER'S GUIDE

TABLE OF CONTENTS

Introduction.....	2
The Swamp.....	3
Horseshoe Bend.....	4
Sandbar.....	5
Crossroads.....	6
Grand Cypress.....	7
Razorback Flat.....	8
Acorn Ridge.....	9
The Hill.....	10
Soggy Bottom.....	11
Pine Flat.....	12

INTRODUCTION

Welcome to Cypress Cove Lodge, an inclusive wildlife resort. During your time here at the Cove, this guide will serve as your ultimate source of information about all of our hunting plots. If you have any more questions, please reach out to your guide for any additional information.

Before you embark on your adventure here at Cypress Cove Lodge, there are a few things you should know:

- ◆ All our stands will hold two people. Each stand is equipped with one office chair that swivels side to side and is height adjustable. Portable swivel chairs are available if two hunters want to sit together. If two hunters would like to sit together, please notify your guides prior to the hunt.
- ◆ Make sure to wear orange hunter's safety vests at all times when traveling to and from the stands. There are additional vests available at the Lodge if you forget yours.
- ◆ Please make sure to follow all Georgia hunting rules and regulations.



CYPRESS COVE
LODGE

THE SWAMP

Our swamp plots consist of heavy brush and terrain, old riverbed, and river slews. Whether it's a trophy buck or a massive hog, you never know what you will see walking into our swamp plots. The swamp offers a very unique kind of hunting experience.



HORSESHOE BEND

Horseshoe Bend sits on an old riverbed, which used to form a horseshoe when the river was live. This 10-foot stand overlooks a wide road on each side and features a drop-off to the rear that provides another shooting lane. Large groups of wildlife have been known to cross over from the river slew that sits directly across.



SANDBAR

Running adjacent to the live river, the Sandbar stand boasts our largest food plot. With around two acres of planted mix along with a feeder, deer and hogs are frequently roaming in the area. With a 10-foot stand sitting right in the middle of the plot, hunters are sure to see plenty of wild game coming in to graze.



CROSSROADS

Crossroads is located at the heart of many of the intersecting roads on the property. The roads provide several great shooting lanes for the wildlife crossing through the brush. Sitting 8 feet tall, this stand puts you right on top of the action. With an intersected L-shaped food plot and feeder, wildlife are constantly moving through the area.



GRAND CYPRESS

Nestled in the shadows of old growth cypress trees, Grand Cypress sits on one of the far sides of the property. The 8-foot stand sits in a small opening in the heavy brush and is surrounded by large oak trees. With a feeder and copious amounts of acorns, the Grand Cypress supplies food for all types of wildlife.



RAZORBACK FLAT

Filled with heavy brush and hog wallows, Razorback Flat is a hog's paradise. Although the numerous hog hollows would suggest that this stand is just for hog hunting, big bucks have been known to emerge from the thick brush. While sitting in our 10-foot stand at Razorback Flat, you'll have a food plot to your left and a feeder to your right, providing ample food for all nearby wildlife.



ACORN RIDGE

Nestled in the heart of the swamp and surrounded by sloughs, Acorn ridge sits on a high ridge covered with old growth oak trees which providing canopy and a large natural food source for nearby wildlife. This paired with a foot plot and feeder ensures an ample food supply for the wildlife in the area.

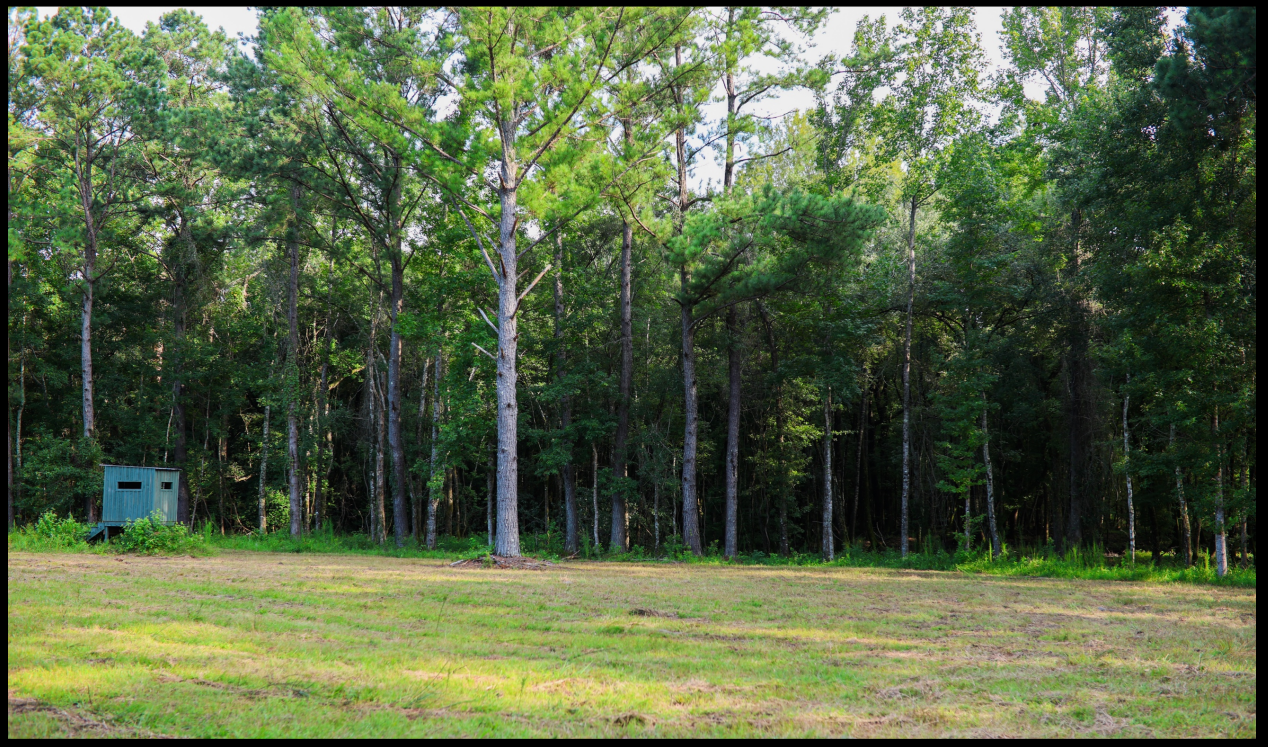


THE HILL

Our Hill plots consist of wet branches, streams and fields of broom sedge that border fields of old growth pine trees and heavy brush. This terrain makes for excellent deer hunting, with high visibility of deer moving through the broom sedge and wandering out from the various water sources. Hogs also love to roam the hill in order to either get a drink or wallow in the wet areas.

SOGGY BOTTOM

Overlooking a wet branch, Soggy Bottom is a frequent watering hole for the nearby wildlife. Surrounded by a broom sedge field, our stand sits in the middle of a foot plot and offers three shooting lanes with total visibility of the nearby branch.



PINE FLAT

Bordering a large heavy brushed pine tree field and a younger pine tree field full of broom sedge, Pine Flat is a great lookout point for moving wildlife. Our 10-foot stand also overlooks a foot plot which draws out wildlife from the surrounding brush. Wildlife can be spotted from great distances moving through the broom sedge.

